

TRANSFORMER LAYOUT

DISTRIBUTION STANDARD

31-480

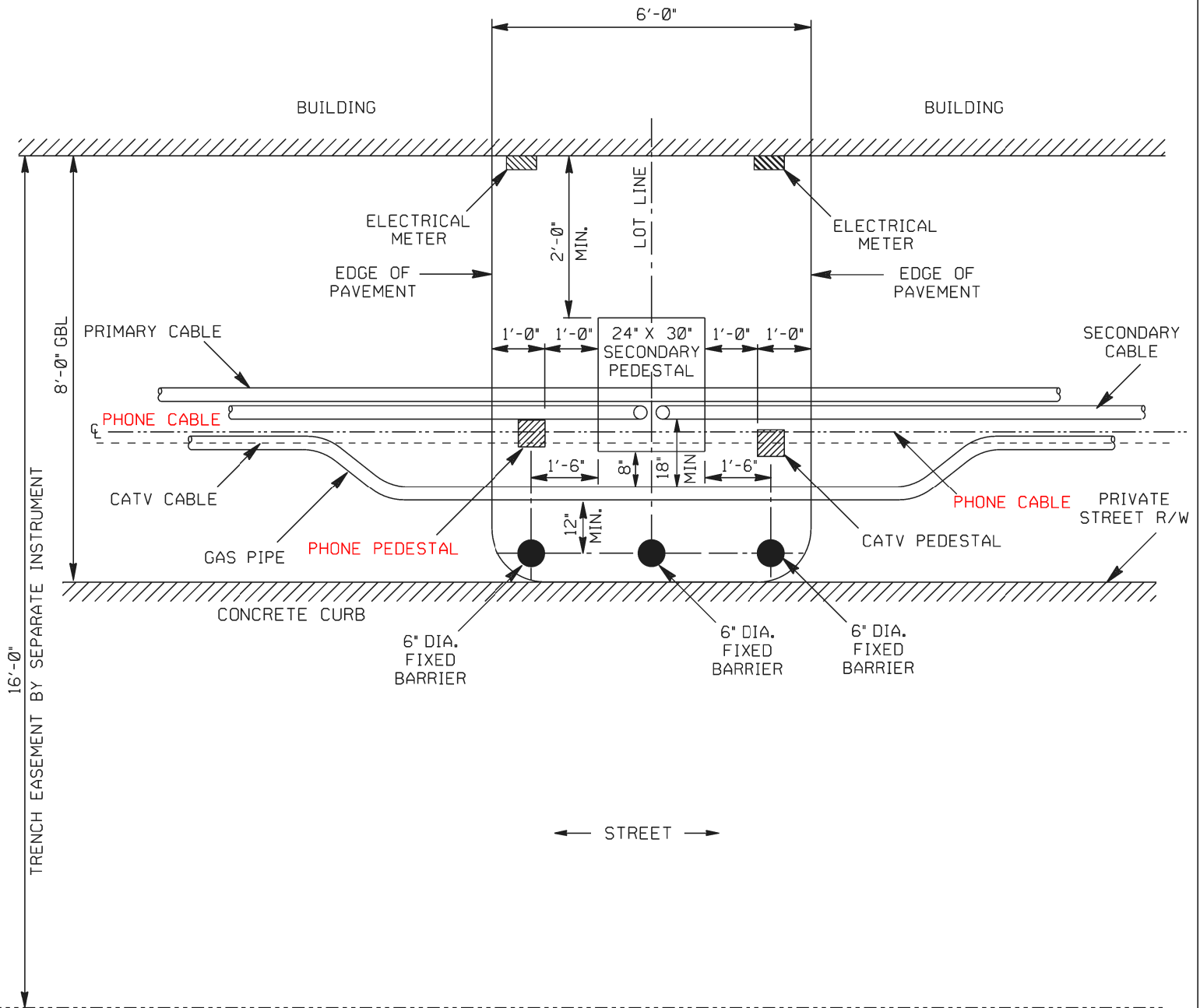
- ① ELECTRICAL METER SHALL BE LOCATED 36" AWAY FROM WINDOW.
- ② ELECTRICAL METER SHALL BE LOCATED OUTSIDE THE GATE.
- ③ CARE MUST BE EXERCISED WHEN INSTALLING BARRIERS DUE TO PROXIMITY OF GAS LINE.
- ④ FOR BARRIER DETAILS - SEE UNDERGROUND DISTRIBUTION STANDARD 80-950.
- ⑤ THE OPPORTUNITY TO EMPLOY THE OPTION DEPICTED HEREON IS CONTINGENT UPON AN EASEMENT BY SEPARATE INSTRUMENT TO BE PREPARED BY CENTERPOINT ENERGY.
- ⑥ THE RADIAL CLEARANCE BETWEEN THE GAS PIPE AND ELECTRICAL LINE SHALL BE A MINIMUM OF 18".

TOWNHOME UTILITY LAYOUT
MINIMUM DIMENSIONS BASED ON
OPERATIONAL GUIDELINES

CenterPoint Energy
HOUSTON, TEXAS

NO.	DATE	REVISION	BY	CH	APP.
2	03-03-2021	CHANGED AT&T LABELING TO PHONE	SCM	JCD	MC
1	2-12-2020	REVISED NOTES 1-2, 4 & 6	SCM	JCD	MC

DRAWN	5-29-15	N.T. KHANH	SECTION 31	SUB-SECTION 480
CHECKED	5-29-15	JAMES C. DAVIS	SHEET 1	OF 5 SHEETS
APPROVED	6-2-15	MANDIE W. SHOOK	DRAWING NUMBER	
			004	237 21



SECONDARY PEDESTAL LAYOUT

- ① ELECTRICAL METER SHALL BE LOCATED 36" AWAY FROM WINDOW.
- ② ELECTRICAL METER SHALL BE LOCATED OUTSIDE THE GATE.
- ③ CARE MUST BE EXERCISED WHEN INSTALLING BARRIERS DUE TO PROXIMITY OF GAS LINE.
- ④ FOR BARRIER DETAILS - SEE UNDERGROUND DISTRIBUTION STANDARD 80-950.
- ⑤ THE OPPORTUNITY TO EMPLOY THE OPTION DEPICTED HEREON IS CONTINGENT UPON AN EASEMENT BY SEPARATE INSTRUMENT TO BE PREPARED BY CENTERPOINT ENERGY.
- ⑥ THE RADIAL CLEARANCE BETWEEN THE GAS PIPE AND ELECTRICAL LINE SHALL BE A MINIMUM OF 18".

DISTRIBUTION STANDARD

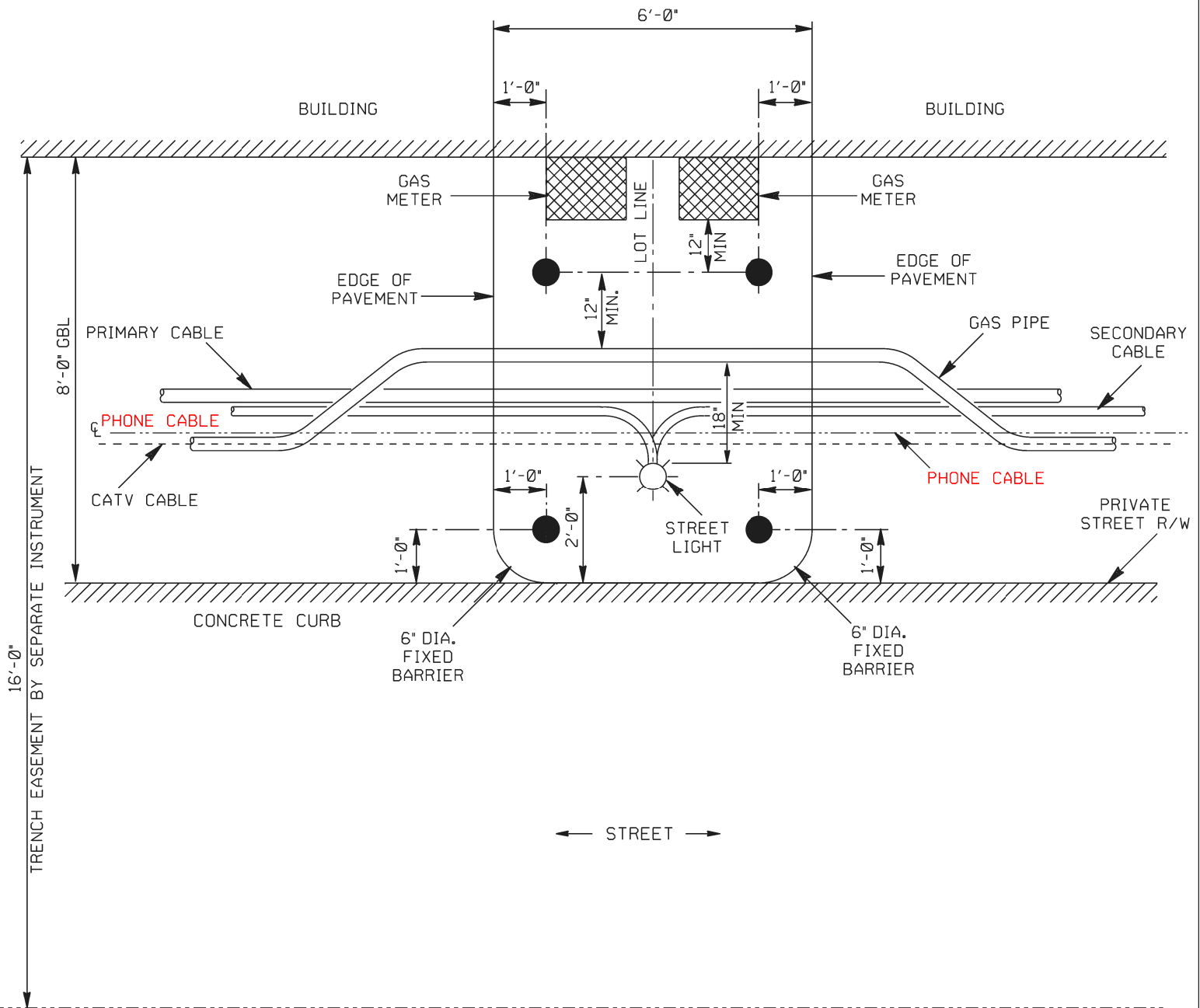
31-480

TOWNHOME UTILITY LAYOUT
MINIMUM DIMENSIONS BASED ON
OPERATIONAL GUIDELINES

CenterPoint Energy
HOUSTON, TEXAS

NO.	DATE	REVISION	BY	CH	APP.
2	03-03-2021	CHANGED AT&T LABELING TO PHONE	SCM	JCD	MC
1	2-12-2020	REVISED NOTES 1-2, 4 & 6	SCM	JCD	MC

DRAWN	5-29-15	N.T. KHANH	SECTION 31	SUB-SECTION 480
CHECKED	5-29-15	JAMES C. DAVIS	SHEET 2	OF 5 SHEETS
APPROVED	6-2-15	MANDIE W. SHOOK	DRAWING NUMBER	
			004	237 21



STREET LIGHT LAYOUT

- ① ELECTRICAL METER SHALL BE LOCATED 36" AWAY FROM WINDOW.
- ② ELECTRICAL METER SHALL BE LOCATED OUTSIDE THE GATE.
- ③ CARE MUST BE EXERCISED WHEN INSTALLING BARRIERS DUE TO PROXIMITY OF GAS LINE.
- ④ FOR BARRIER DETAILS - SEE UNDERGROUND DISTRIBUTION STANDARD 80-950.
- ⑤ THE OPPORTUNITY TO EMPLOY THE OPTION DEPICTED HEREON IS CONTINGENT UPON AN EASEMENT BY SEPARATE INSTRUMENT TO BE PREPARED BY CENTERPOINT ENERGY.
- ⑥ THE RADIAL CLEARANCE BETWEEN THE GAS PIPE AND ELECTRICAL LINE SHALL BE A MINIMUM OF 18".

DISTRIBUTION STANDARD

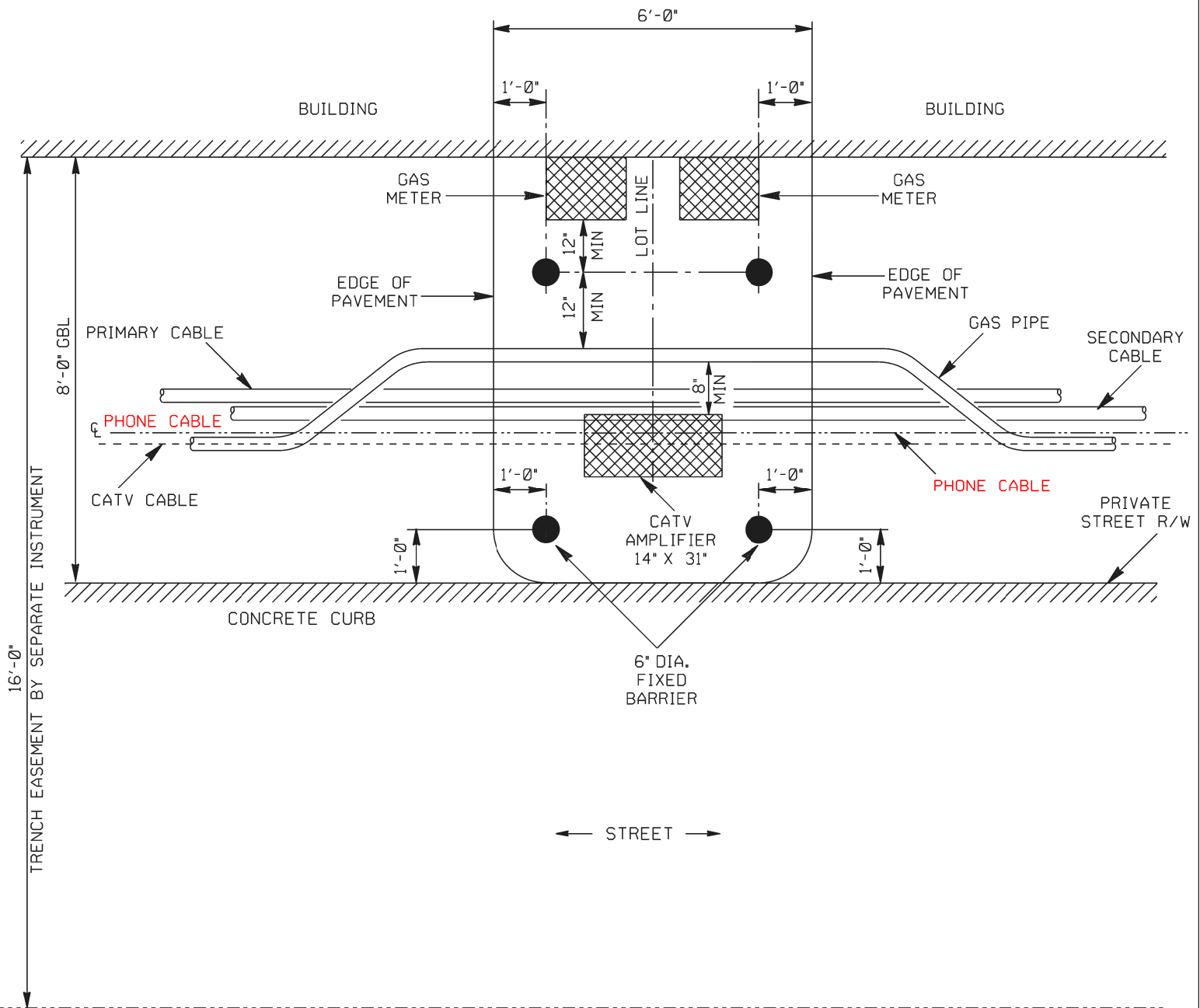
31-480

TOWNHOME UTILITY LAYOUT
MINIMUM DIMENSIONS BASED ON
OPERATIONAL GUIDELINES

CenterPoint Energy
HOUSTON, TEXAS

NO.	DATE	REVISION	BY	CH	APP.
2	03-03-2021	CHANGED AT&T LABELING TO PHONE	SCM	JCD	MC
1	2-12-2020	REVISED NOTES 1-2, 4 & 6	SCM	JCD	MC

DRAWN	5-29-15	N.T. KHANH	SECTION 31	SUB-SECTION 480
CHECKED	5-29-15	JAMES C. DAVIS	SHEET 3	OF 5 SHEETS
APPROVED	6-2-15	MANDIE W. SHOOK	DRAWING NUMBER	
			004	237
				21



CATV AMPLIFIER PEDESTAL LAYOUT

- ① ELECTRICAL METER SHALL BE LOCATED 36" AWAY FROM WINDOW.
- ② ELECTRICAL METER SHALL BE LOCATED OUTSIDE THE GATE.
- ③ CARE MUST BE EXERCISED WHEN INSTALLING BARRIERS DUE TO PROXIMITY OF GAS LINE.
- ④ FOR BARRIER DETAILS - SEE UNDERGROUND DISTRIBUTION STANDARD 80-950.
- ⑤ THE OPPORTUNITY TO EMPLOY THE OPTION DEPICTED HEREON IS CONTINGENT UPON AN EASEMENT BY SEPARATE INSTRUMENT TO BE PREPARED BY CENTERPOINT ENERGY.
- ⑥ THE RADIAL CLEARANCE BETWEEN THE GAS PIPE AND ELECTRICAL LINE SHALL BE A MINIMUM OF 18".

DISTRIBUTION STANDARD

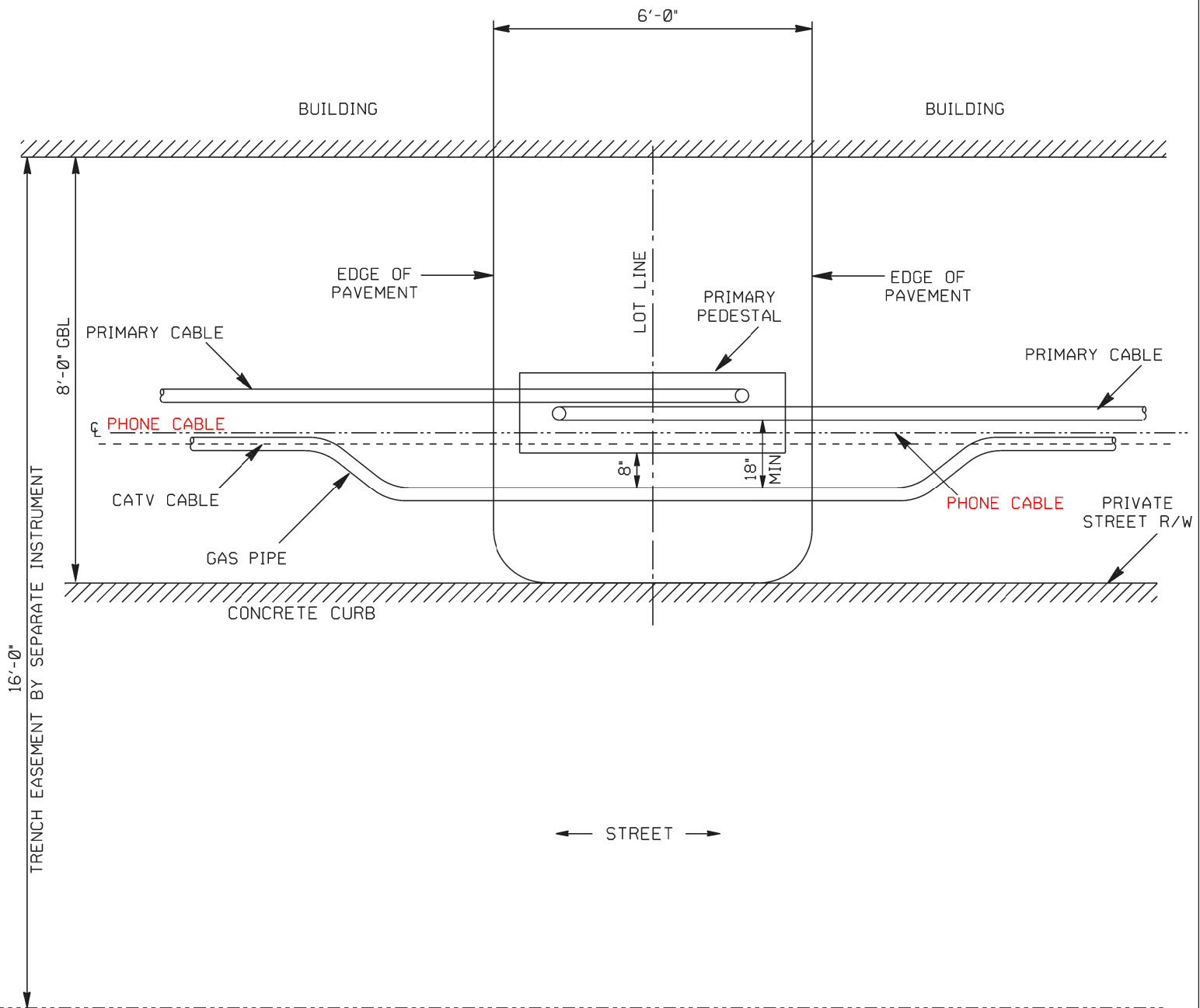
31-480

TOWNHOME UTILITY LAYOUT
MINIMUM DIMENSIONS BASED ON
OPERATIONAL GUIDELINES

CenterPoint Energy
HOUSTON, TEXAS

NO.	DATE	REVISION	BY	CH	APP.
2	03-03-2021	CHANGED AT&T LABELING TO PHONE	SCM	JCD	MC
1	2-12-2020	REVISED NOTES 1-2, 4 & 6	SCM	JCD	MC

DRAWN	5-29-15	N.T. KHANH	SECTION 31	SUB-SECTION 480
CHECKED	5-29-15	JAMES C. DAVIS	SHEET 4	OF 5 SHEETS
APPROVED	6-2-15	MANDIE W. SHOOK	DRAWING NUMBER	
			004	237 21



PRIMARY PULLHOLE LAYOUT

- ① ELECTRICAL METER SHALL BE LOCATED 36" AWAY FROM WINDOW.
- ② ELECTRICAL METER SHALL BE LOCATED OUTSIDE THE GATE.
- ③ CARE MUST BE EXERCISED WHEN INSTALLING BARRIERS DUE TO PROXIMITY OF GAS LINE.
- ④ FOR BARRIER DETAILS - SEE UNDERGROUND DISTRIBUTION STANDARD 80-950.
- ⑤ THE OPPORTUNITY TO EMPLOY THE OPTION DEPICTED HEREON IS CONTINGENT UPON AN EASEMENT BY SEPARATE INSTRUMENT TO BE PREPARED BY CENTERPOINT ENERGY.
- ⑥ THE RADIAL CLEARANCE BETWEEN THE GAS PIPE AND ELECTRICAL LINE SHALL BE A MINIMUM OF 18".

DISTRIBUTION STANDARD

31-480

TOWNHOME UTILITY LAYOUT MINIMUM DIMENSIONS BASED ON OPERATIONAL GUIDELINES

CenterPoint Energy
HOUSTON, TEXAS

NO.	DATE	REVISION	BY	CH	APP.
2	03-03-2021	CHANGED AT&T LABELING TO PHONE	SCM	JCD	MC
1	2-12-2020	REVISED NOTES 1-2, 4 & 6	SCM	JCD	MC

DRAWN	5-29-15	N.T. KHANH	SECTION 31	SUB-SECTION 480
CHECKED	5-29-15	JAMES C. DAVIS	SHEET 5	OF 5 SHEETS
APPROVED	6-2-15	MANDIE W. SHOOK	DRAWING NUMBER	
			004	237 21