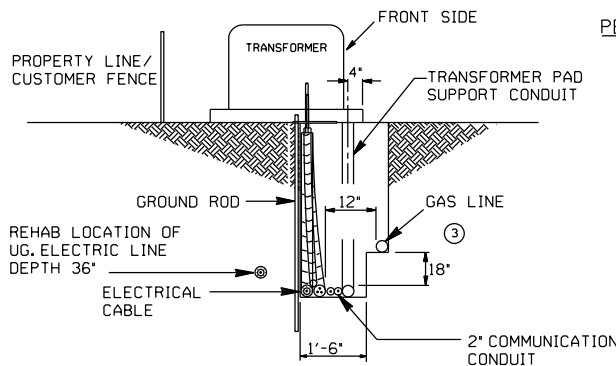


BACK TO BACK EASEMENT

PERIMETER EASEMENT



DISTRIBUTION STANDARD
31-436

- ① SIDE LOT EASEMENTS WILL REQUIRE THE SAME DIMENSIONS AND SPACE ALLOCATION AS EASEMENT ON REAR LOT LINE WHETHER IT BE CENTERED ON, OR ADJACENT TO, SIDE LOT LINE.
- ② CUSTOMER'S SERVICE LATERALS MUST HAVE A MINIMUM OF 24" EARTH COVER AND MUST CLEAR ALL OTHER UTILITIES BY 4" OR MORE.
- ③ IN TYPICAL EAST-WEST AND NORTH-SOUTH EASEMENTS, THE ARRANGEMENT WILL BE GENERALLY AS SHOWN. IN CURVILINEAR DEVELOPMENT PATTERNS, STANDARD ALLOCATED LOCATIONS IN REFERENCE TO THE NORTH AND EAST SIDE WILL BE AT A CONVENIENT STARTING PLACE AND WILL USUALLY BE DECIDED BY MUTUAL AGREEMENT. CROSSOVERS WILL NOT BE MADE ALONG THE EASEMENT.

- ④ AT ELECTRICAL EQUIPMENT LOCATIONS GAS LINE SHALL BE LOCATED THE FURTHEST AWAY FROM PROPERTY LINE.
- ⑤ FRONT OF ELECTRICAL EQUIPMENT SHALL ALWAYS FACE AWAY FROM PROPERTY LINE.
- ⑥ THE SECONDARY PEDESTAL SHOULD BE INSTALLED 90 DEGREES TO TRENCH.

ELECTRICAL AND GAS JOINT USE RESIDENTIAL EASEMENT DETAILS (14' EASEMENT)

CenterPoint Energy
HOUSTON, TEXAS

DRAWN	3-29-07	N.T. KHANH	SECTION 31	SUB-SECTION 436
CHECKED	5-31-07	JAMES C. DAVIS	SHEET 1 OF 1	SHEETS
APPROVED	5-31-07	LED H. HAAS	DRAWING NUMBER	
			004	269 03

NO.	DATE	REVISION	BY	CH	APP.
1	11-07-2022	REVIEWED PER CYCLE REVIEW	SCM	MKB	MC